

Name

5.5 ext

Graph Absolute

Value Functions

Alg I

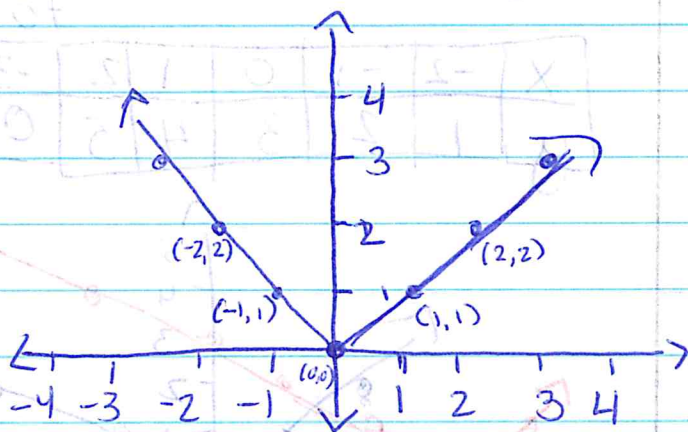
1/11

I/A

I can graph  
absolute  
value functions

\* absolute value function is  $f(x) = |x|$

Parent Function:



Ch. 5 Quiz

\* When  $g(x) = |x-h|$ :  
- if  $h > 0$ , the graph moves  $h$  units to the right.  
- if  $h < 0$ , the graph moves  $h$  units to the left

\* When  $g(x) = |x| + k$

- if  $k > 0$ , the graph moves  $k$  units up
- if  $k < 0$ , the graph moves  $k$  units down

\* When  $g(x) = a|x|$

- if  $a > 1$ , the graph is narrow
- if  $0 < a < 1$ , the graph is wider
- if  $a < 0$ , the graph opens down

Name

# Graph Absolute Value

Alg I

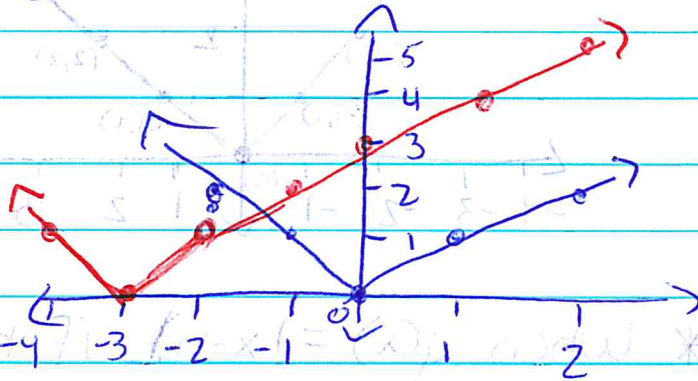
## Functions

I can graph absolute value functions.

### Example 1:

1)  $g(x) = |x + 3|$  The graph moves 3 to the left.

x	-2	-1	0	1	2	-3	-4
y	1	2	3	4	5	0	1



\* Complete Skills Practice, pg. 339, #3-6

### Example 2:

2)  $g(x) = 2|x|$  The graph is narrower

x	-2	-1	0	1	2
y	4	2	0	2	4

