

Name

§.3ext

Solve Linear Inequalities By Graphing

Alg I

I can use graphs to solve linear inequalities.

Steps to solve inequalities by graphing:

- 1) Write the inequality as $y = ax + b$
- 2) Graph the equation
- 3) Use the x-intercepts to find the solution

Ch. 5 Quiz

Example 1:

$$1) \quad 2x + 5 > 11$$

$$\quad \quad \quad -11 \quad -11$$

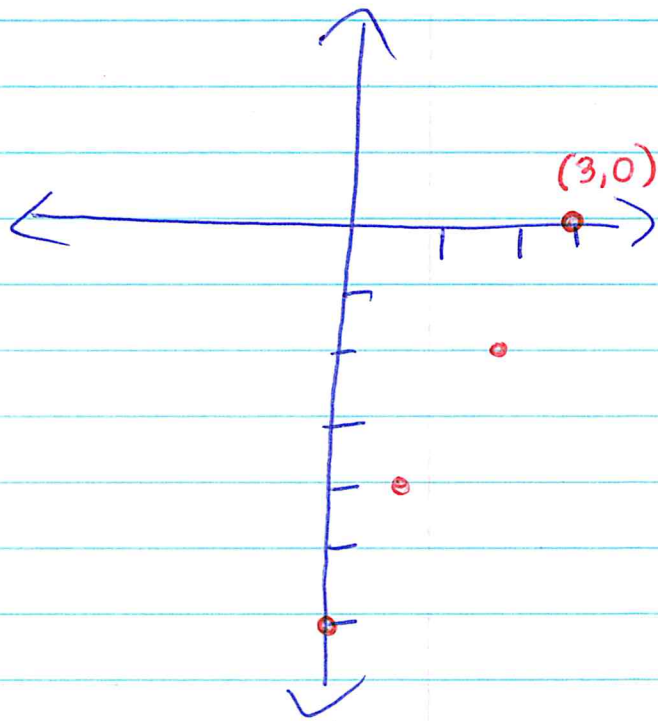
$$2x - 6 > 0$$

$$y = 2x - 6$$

$$m = \frac{2}{1}$$

$$b = -6 \quad (0, -6)$$

$$\boxed{x > 3}$$



* Complete practice, Pg. 320, #2-3