

Name

4.3 Write Linear Equations in Point-Slope Form

Alg I

I can write linear equations in point-slope form.

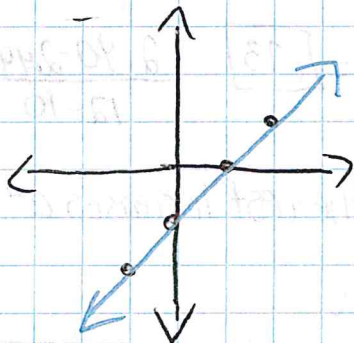
Point-Slope form: $y - y_1 = m(x - x_1)$

Example 1:

$$1) (-1, 4) \quad m = -2 \quad \begin{array}{l} y - 4 = -2(x - -1) \\ \boxed{y - 4 = -2(x + 1)} \end{array}$$

Example 2:

$$2) y - 1 = \frac{1}{2}(x - 2) \quad m = \frac{1}{2} \quad (2, 1)$$



Example 3:

$$3) (x_1, y_1) (x_2, y_2) \quad m = \frac{4-3}{4-2} = \frac{1}{2}$$

$$y - 3 = \frac{1}{2}(x - 2) \quad \text{OR} \quad y - 4 = \frac{1}{2}(x - 4)$$

Example 4:

$$4) C - 250 = 60(s - 1)$$

$$C - 250 = 60s - 60$$

$$\begin{array}{r} +250 \qquad +250 \\ \hline \end{array}$$

$$a) C = 60s + 190$$

$$b) C = 60(9) + 190$$

$$C = 540 + 190$$

$$C = 730$$

The second company charges less.

$$865 > 730$$

Ch. 3
Quiz