

Name

Alg I

Graph Linear Functions

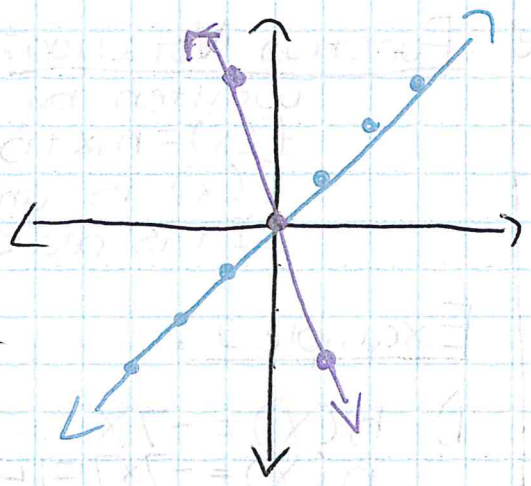
I can use function notation.

Ch. 3 Quiz

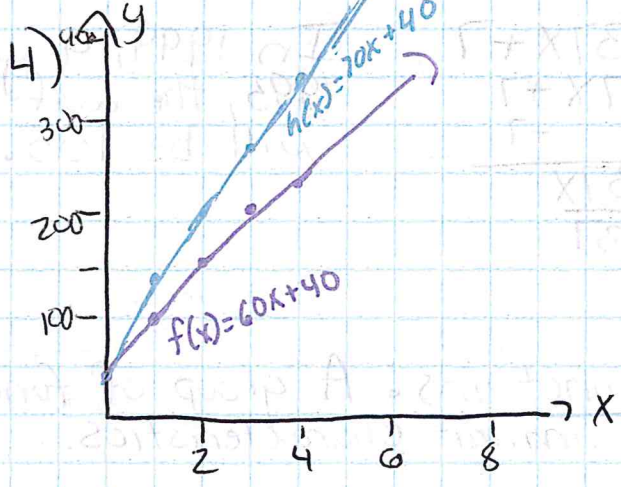
Example 4:

$$3) h(x) = -3x$$

The slope of h is negative. The y -intercept for both is 0.



Example 5:



$$f(x) = 60x + 40$$
$$h(x) = 70x + 40$$

h rises faster than f . The y -intercept of both graphs are 40.

* Complete Skills Practice Pg. 203, #