

Name

Graph Using Slope-Intercept Form

Alg I

I can graph linear equations using slope-intercept form.

Example 3:

Stairs: $d = -1.4t + 28$

$$0 = -1.4t + 28$$

$$\frac{-28}{-1.4} = \frac{-28}{-1.4}$$

$$t = 20$$

E: $d = -2t + 28$

$$0 = -2t + 28$$

$$\frac{-28}{-2} = \frac{-28}{-2}$$

$$t = 14$$

$20 - 14 = 6$

You save 6 seconds.

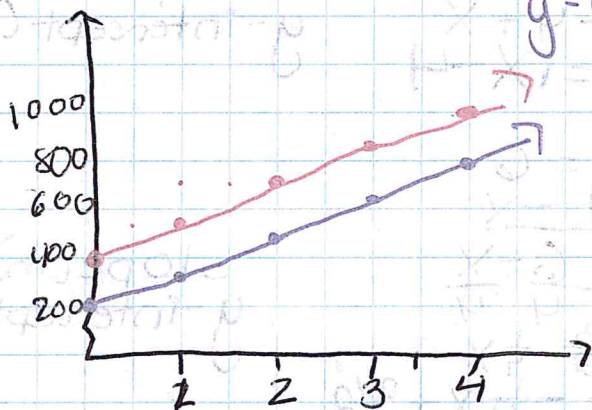
Ch. 3 Quiz

*Complete Skills Practice, pg.

Example 4:

6) $C = 150n + 200$

slope (m) = 150
y-intercept (b) = 200



The difference is \$200,000.
 $400 - 200 = 200$

Parallel Lines: Do not intersect.
Lines with the same slope are parallel

Example 5:

1) $(x_1, y_1) = (-1, 2)$ $(x_2, y_2) = (3, 4)$

$$m = \frac{4-2}{3-(-1)} = \frac{2}{4} = \frac{1}{2}$$

2) $(x_1, y_1) = (2, 2)$ $(x_2, y_2) = (5, 8)$

$$m = \frac{8-2}{5-2} = \frac{6}{3} = 2$$

3) $(x_1, y_1) = (-9, -2)$ $(x_2, y_2) = (3, 1)$

$$m = \frac{1-(-2)}{-3-(-9)} = \frac{3}{6} = \frac{1}{2}$$

a+c