

Name

Find Slope and Rate of Change

Alg I

I can find the slope of a line and interpret slope as a rate of change.

Example 6:

8) week 10: $(10, 72)$

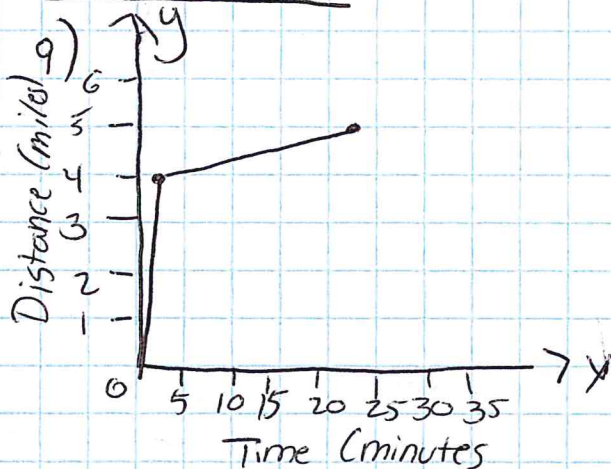
week 12: $(12, 70)$

$$\text{Week } 10-12: \frac{70-72}{12-10} = \frac{-2}{2} = -1$$

The attendance decreased, but not as rapidly.

Ch. 3 Quiz

Example 7:



* Complete Skills practice, pg. 177, II