

Name

Alg I

Graph Using Intercepts

I can graph a linear equation using intercepts.

Example 4:

6) $(0, 30)$ $9 \times 0 = 0$ Total = \$420
 $14 \times 30 = 420$

$(15, 20)$ $15 \times 9 = 135$ \$415
 $20 \times 14 = 280$
 $\underline{415}$

$(30, 10)$ $30 \times 9 = 270$ \$410
 $10 \times 14 = 140$
 $\underline{410}$

$(45, 0)$ $45 \times 9 = 405$ \$405
 $0 \times 14 = 0$

45 small tables and 0 large tables.

Example 5:

7) $e = 500t - 10,000$
 $y = 500x - 10,000$

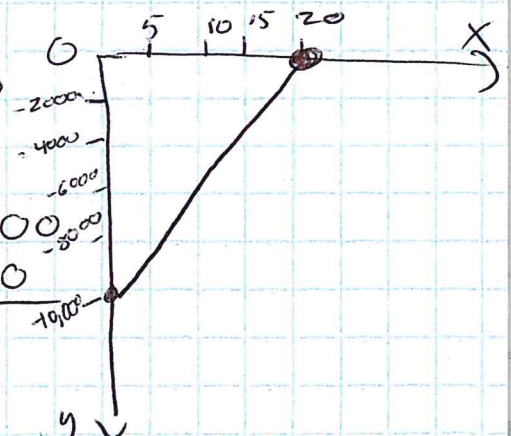
X-intercept: $0 = 500x - 10,000$

$(20, 0)$ $\frac{+10000}{500} = \frac{+10000}{500}$
 $X = 20$

y-intercept: $y = 500(0) - 10,000$
 $y = -10,000$

$(0, -10,000)$

domain: $0 \leq x \leq 20$
 Range: $-10,000 \leq y \leq 0$



Ch. 3 Quiz

* Completes Skills
 Practice, pg. 167