

Name

Alg I

Graph Using Intercepts

I can graph a linear equation using intercepts.

Ch. 3 Quiz

$$3) -3x + 5y = -15$$

$$x\text{-intercept: } -3x + 5(0) = -15$$

$$\frac{-3x}{-3} = \frac{-15}{-3}$$

$$x = 5$$

(5, 0)

$$y\text{-intercept: } -3(0) + 5y = -15$$

$$\frac{5y}{5} = \frac{-15}{5}$$

$$y = -3$$

(0, -3)

Example 2:

$$4) 6x + 7y = 42$$

$$x\text{-intercept: } 6x + 7(0) = 42$$

$$\frac{6x}{6} = \frac{42}{6}$$

$$x = 7$$

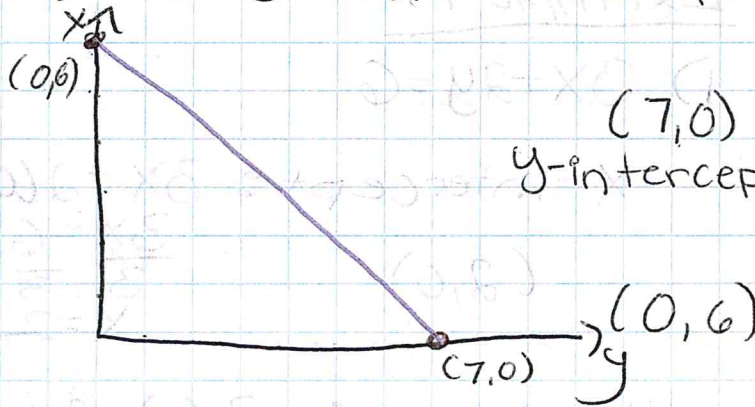
(7, 0)

$$y\text{-intercept: } 6(0) + 7y = 42$$

$$\frac{7y}{7} = \frac{42}{7}$$

$$y = 6$$

(0, 6)



Example 3:

$$x\text{-intercept: } (-4, 0)$$

$$y\text{-intercept: } (0, 2)$$

