

Name

Graph Linear Equations

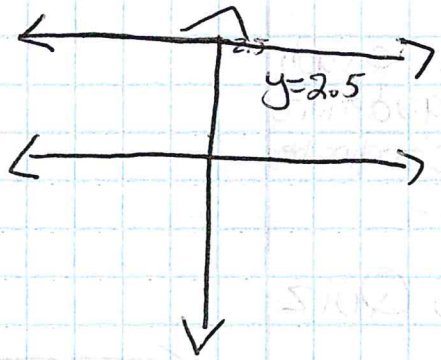
Alg I.

I can graph linear equations in a coordinate plane.

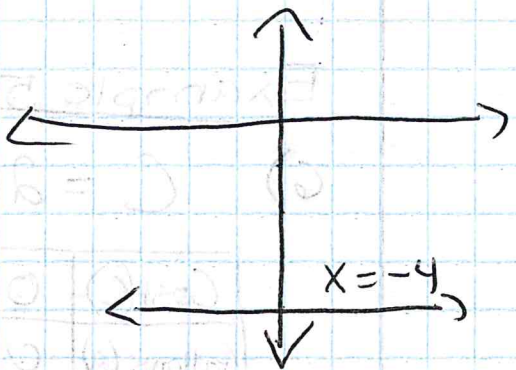
Ch. 3 Quiz

Example 3:

3) $y = 2.5$
(Horizontal)



4) $x = -4$
(Vertical)



Linear Functions: An equation that has $B \neq 0$ for $AX + BY = C$. If no domain is specified, it is ALL Real Numbers.

Example 4:

5) $y = -3x + 1 \quad x \leq 0$

x	-4	-3	-2	-1	0
y	13	10	7	4	1

$$y = -3(-4) + 1$$

$$y = 12 + 1 = 13$$

$$y = -3(-3) + 1$$

$$y = 9 + 1 = 10$$

$$y = -3(-2) + 1$$

$$y = 6 + 1 = 7$$

$$y = -3(-1) + 1$$

$$y = 3 + 1 = 4$$

$$y = -3(0) + 1$$

$$y = 0 + 1 = 1$$

