

Name

8/30/16 or

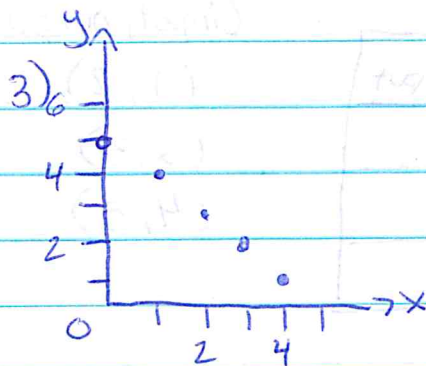
8/31/16

Alg I.

Represents Functions as Graphs

I can represent functions as graphs.

Example 3:



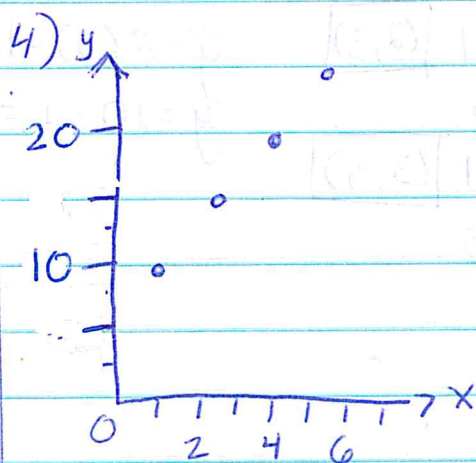
x	0	1	2	3	4
y	5	4	3	2	1

$$y = 5 - x$$

domain: 0, 1, 2, 3, and 4

range: 1, 2, 3, 4, and 5

Ch. 1 Quiz
9/1 or 9/2



x	1	2	3	4
y	10	15	20	25

$$y = 5x + 5$$

domain: 1, 2, 3, and 4

range: 10, 15, 20, and 25

Example 4:

5) yes; the graph seems to increase \$0.2 million every 2 years.

* Complete Skills
Practice pg. 52,
#5-13 odd,
15, 16